

Sunshine Coast Environmental Education Centre

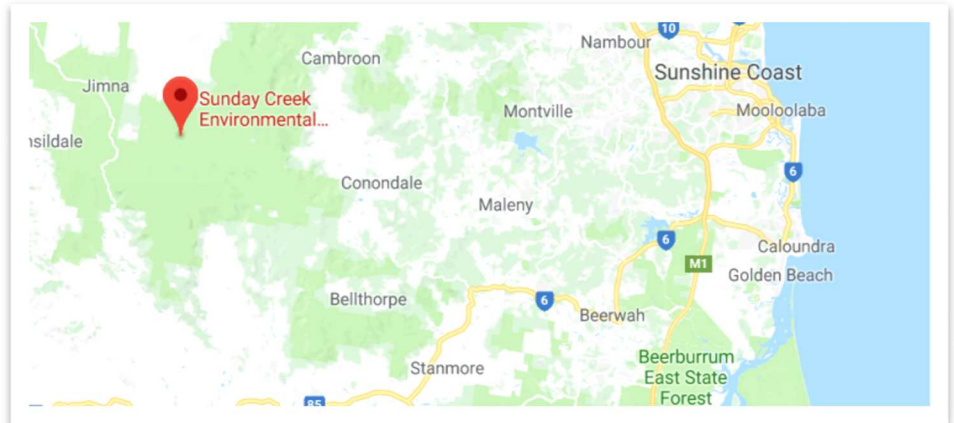
- Sunday Creek Campsite



Parent Information Flyer: Residential Camp

Location and Environment

Nestled into the ridges of the Conondale National Park, the Sunshine Coast Environmental Education Centre— Sunday Creek Campsite, is located near Jimna, and is a 2 hour drive west, via Kilcoy from the Sunshine Coast. The camp centre is surrounded by both wet and dry sclerophyll forests, a unique habitat for rare fauna and flora. Its historical value is rich with evidence of its indigenous occupation, gold mining and timber getting past.



Accommodation Facilities

The centre can accommodate class groups which consist of up to 35 students at a time. The sleeping barracks can be separated according to gender, with 4 rooms in one wing, and 5 rooms in the other. There is also a teacher barracks which consists of 2 rooms. The sleeping quarters consist of double bunk beds, with single mattresses, all of which are covered in hygienically treated mattress protectors. All students must bring their own bedding, as appropriate to the season: sheets, blankets, doonas, sleeping bags, pillow and bath towel. Bathroom amenities include a gender specific amenities block, inclusive of separate showering stalls and toilets, situated approximately 30 metres from the accommodation barracks.



Teacher Expertise

The Sunshine Coast Environmental Education Centre manages the Sunday Creek campsite. As an Education Queensland site, it employs a highly qualified staff, consisting of Teachers, Caterer, Unit Support Officer, Cleaner, Indigenous Resident Artist and Administration staff. The teachers hold industry standard accredited qualifications in Remote First Aid, Bushwalking, Orienteering, High Ropes, Canoeing, Surfing and Reptile Management. As EQ staff, our teachers are qualified in Learning Areas such as Health and Physical Education, History, Geography, English, Maths and Visual Arts. Our staff have also completed training in Glasser's *Choice Theory*, which forms the foundation of our behaviour management practice.



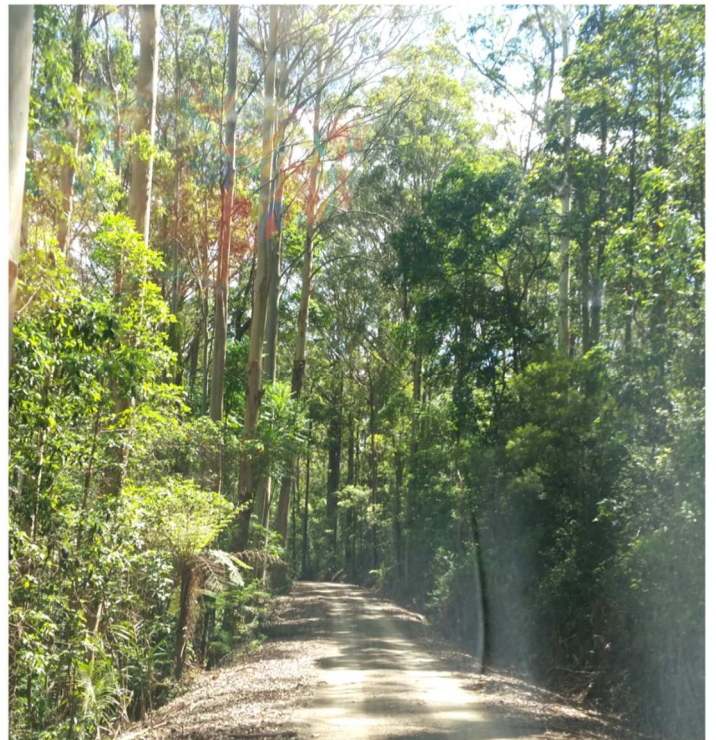
Catering

Our on-site caterer will prepare and serve a range of nutritious, healthy meals for students on camp. Filtered rainwater is consumed as the main hydration during the camp, so it is requested that students bring their own drink bottle. Special dietary needs can be catered for providing specific information is supplied to the centre during the planning phase of the camp. Clear communication via the visiting teacher is recommended to avoid disappointment. If your child has a medical condition that is linked to dietary consumption, please ensure this is clearly stated on camp information forms.



Curriculum Links

Our camps focus on the personal and social development of students, which promote student self management, teamwork and leadership (Australian Curriculum: General Capabilities) through Orienteering courses, Teamwork challenges and Sensory walks. The History, Geography, Science and Indigenous Perspectives Learning Areas (Australian Curriculum) are enhanced through Bushwalking, Birdwatching, Archaeological Dig, Gold Panning, Quartz Crushing and Cross Cut Saw activities.



Contact Us:

For more information, contact us on (07) 5448 4568

Or email: admin@sunshinecoastec.eq.edu.au